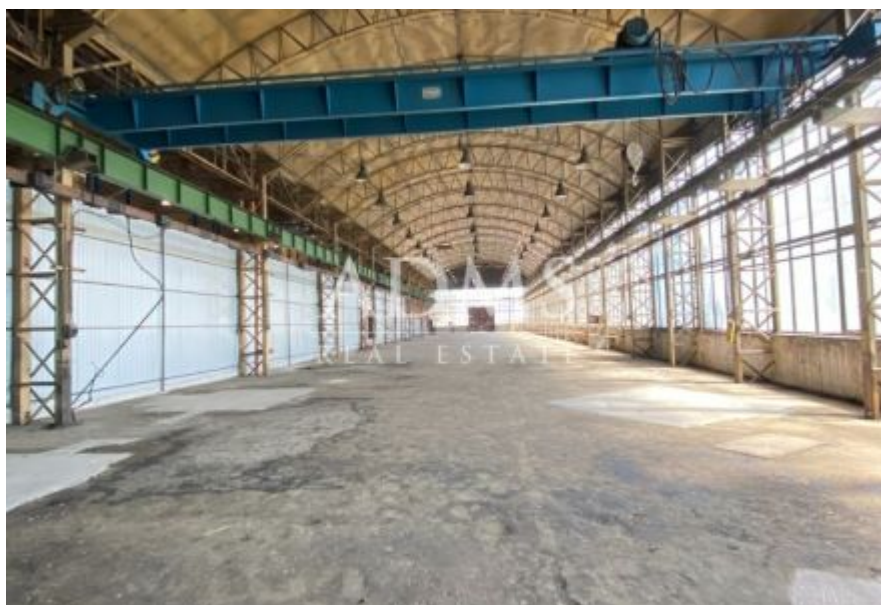


## Sale: Industrial area in Beluša

ID 1501 VI



<b>Region:</b>	Trenčiansky kraj
<b>District:</b>	Púchov
<b>Town:</b>	Beluša
<b>Category:</b>	Commercial objects
<b>Property type:</b>	Manufacturing
<b>Floor area:</b>	0 m <sup>2</sup>
<b>Built-up area:</b>	3380 m <sup>2</sup>
<b>Plot area:</b>	10952 m <sup>2</sup>
<b>Price:</b>	0,00 €

Production area - industrial zone in Beluša - 150 km from Bratislava  
- total area of land 10 952 sqm

### DESCRIPTION

- Complex consists of several objects:

#### **1/ Production hall**

- built-up area of approx. 2,200 sqm
- clearance height 6.85 m
- 73 x 15 m (L x W)
- 220/380V electricity
- crane track
- crane capacity 5t
- separate entrance
- unheated hall

#### **2 / steel warehouse**

- clearance - 5m
- Built-up area 687 sqm (55x12,5m)

#### **3 / steel warehouse**

- Built-up area 192 sqm (12x16m)
- 220 / 380V

#### **4/ Administrative building**

- 300 sqm

- part of the area is a substation, which served for electricity supply. energy for the entire area
- the substation belongs to a separate line no. 207 from the Ladecka Hydropower Plant
- the capacity of the substation is 5MW
- the complex has its own wastewater treatment plant, which cleans sewage and rainwater from the entire area

<b>Heated:</b>	yes	<b>Condition:</b>	original state
<b>Construction:</b>	mixed	<b>Access road:</b>	asphalt
<b>Water supply:</b>	on the plot	<b>230V:</b>	yes
<b>400V:</b>	yes	<b>Umiestnenie Plynu:</b>	on the plot
<b>Umiestnenie kanalizácie:</b>	on the plot	<b>sewage treatment plant:</b>	none
<b>septic:</b>	none	<b>Grease separator:</b>	none
<b>Ramp:</b>	none	<b>Hydraulic ramp:</b>	none
<b>Crane:</b>	yes	<b>Cargo Lift:</b>	none
<b>Phone:</b>	yes	<b>Internet:</b>	yes
<b>CCTV:</b>	none	<b>Alarm:</b>	yes
<b>Security service:</b>	none		

