

## Rent: Administratívne priestory Žilina

ID 11578766 III



|                       |                              |
|-----------------------|------------------------------|
| <b>Region:</b>        | Žilinský kraj                |
| <b>District:</b>      | Žilina                       |
| <b>Town:</b>          | Žilina                       |
| <b>Category:</b>      | Commercial objects           |
| <b>Property type:</b> | office building              |
| <b>Floor area:</b>    | 357 m <sup>2</sup>           |
| <b>Built-up area:</b> | 0 m <sup>2</sup>             |
| <b>Plot area:</b>     | 0 m <sup>2</sup>             |
| <b>Price:</b>         | 0,00 €/m <sup>2</sup> /month |

**Administratívne priestory** v Žiline na prenájom

### ZÁKLADANÉ ÚDAJE:

#### LOKALITA a PRÍSTUP

- priemyselná časť mesta so všetkými IS (vodovod, kanalizácia, elektrina, plyn, telef. sieť)
- prístup z verejnej komunikácie cez vrátnicu
- v rámci strategicky umiestneného parku
- oplotený priemyselný areál

#### Administratívne priestory - celková podlahová plocha: 357 m<sup>2</sup>

- kuchynka
- sprchy, šatne, toalety

#### VYUŽITIE

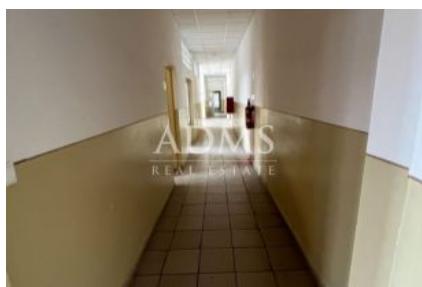
- kancelárske priestory, sídlo firmy

Voľné ihneď

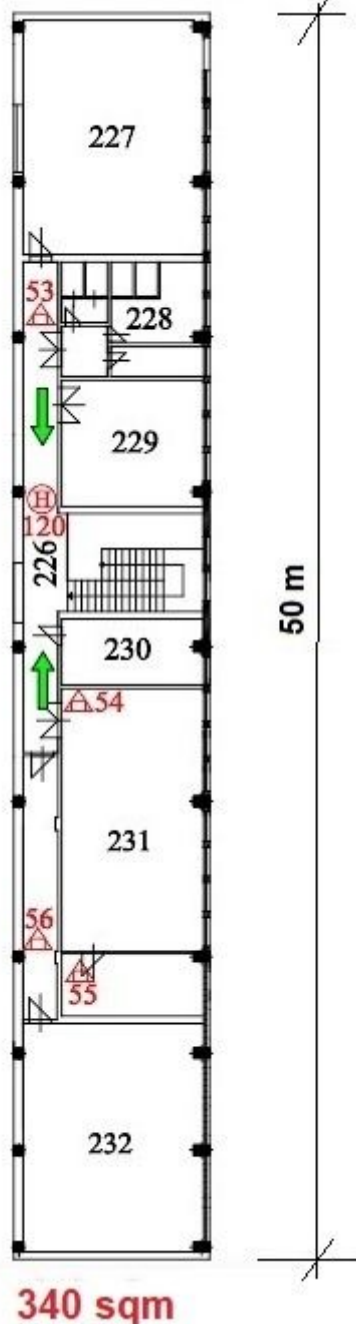
**V prípade požiadavky klienta prebehne kompletná rekonštrukcia priestorov na mieru nájomcu.**

|                      |         |                       |                      |
|----------------------|---------|-----------------------|----------------------|
| <b>Heated:</b>       | yes     | <b>Condition:</b>     | partly reconstructed |
| <b>Construction:</b> | mixed   | <b>:</b>              | unknown              |
| <b>Access road:</b>  | asphalt | <b>Watter supply:</b> | on the plot          |
| <b>230V:</b>         | yes     | <b>400V:</b>          | yes                  |

|                                |             |                                 |             |
|--------------------------------|-------------|---------------------------------|-------------|
| <b>Umiestnenie Plynu:</b>      | on the plot | <b>Umiestnenie kanalizácie:</b> | on the plot |
| <b>sewage treatment plant:</b> | none        | <b>septic:</b>                  | none        |
| <b>Grease separator:</b>       | none        | <b>Ramp:</b>                    | none        |
| <b>Hydraulic ramp:</b>         | none        | <b>Crane:</b>                   | none        |
| <b>Cargo Lift:</b>             | none        | <b>Phone:</b>                   | yes         |
| <b>Internet:</b>               | yes         | <b>CCTV:</b>                    | none        |
| <b>Alarm:</b>                  | yes         | <b>Security service:</b>        | yes         |



I. POSCHODIE



**Zoom-in at the office space for lease layout:**



| Room #  | Description              | Area (m2)       |
|---------|--------------------------|-----------------|
| 201     | Entrance / Staircase     | 22,58           |
| 226     | Corridor                 | 44,85           |
| 227     | Office                   | 71,41           |
| 228     | Toilets / Changing rooms | 24,94           |
| 229     | Office                   | 30,24           |
| 230+231 | Office /Laboratory       | 93,48           |
| 232     | Office / Meeting room    | 69,70           |
| -       | <b>Total:</b>            | <b>357,2 m2</b> |