

Sale: Industrial park - Krásno nad Kysucou

ID 1578159



Region:	Žilinský kraj
District:	Čadca
Town:	Krásno nad Kysucou
Street:	Krásno nad Kysucou
Category:	Plot
Property type:	Industrial plot
Utilisation:	Light construction
Plot area:	28730 m ²
Price:	0,00 €

Industrial plot in new industrial zone.

- park is situated in the middle of the triangle Ostrava - Žilina - Katowice, which is one of the leading industrial regions in Central Europe
- high concentration of automobile manufacturers and their suppliers in the border regions of the Czech Republic, Poland and Slovakia
- Volkswagen, Siemens and TRW
- location - between Hyundai plant in Nošovice (CZ) and Kia in Zilina
- complete infrastructure
- assumed connection to the D3 highway with possibility of connection to the international railway corridor Žilina - Bohumín

Plot: 28 437 sqm

Project for 2 industrial buildings - warehouses:

PROJECT layout of buildings:

WAREHOUSE B 10 210 sqm

- 1ST STAGE 3 000 sqm
- 2ND STAGE 4 000 sqm
- 3RD STAGE 1 690 sqm
- 4TH STAGE 1 520 sqm

WAREHOUSE C 1 200 sqm

Project for 2 warehouses, which can be divided into smaller units according to the individual requirements of the client

Standard technical specification:

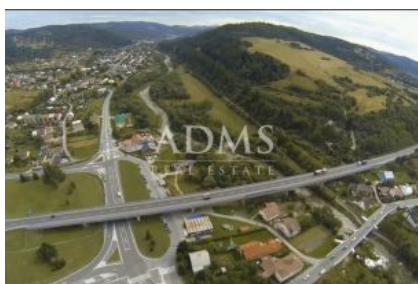
- clearance: 10 meters
- hydraulic bridges: 1/1 000 sqm
- ESFR sprinkler system
- load capacity of floors: 5T/sqm
- parking lot for cars and trucks
- truck handling yard
- office space and social facilities according to the client's requirements

LOCATION AND TRANSPORT ACCESSIBILITY

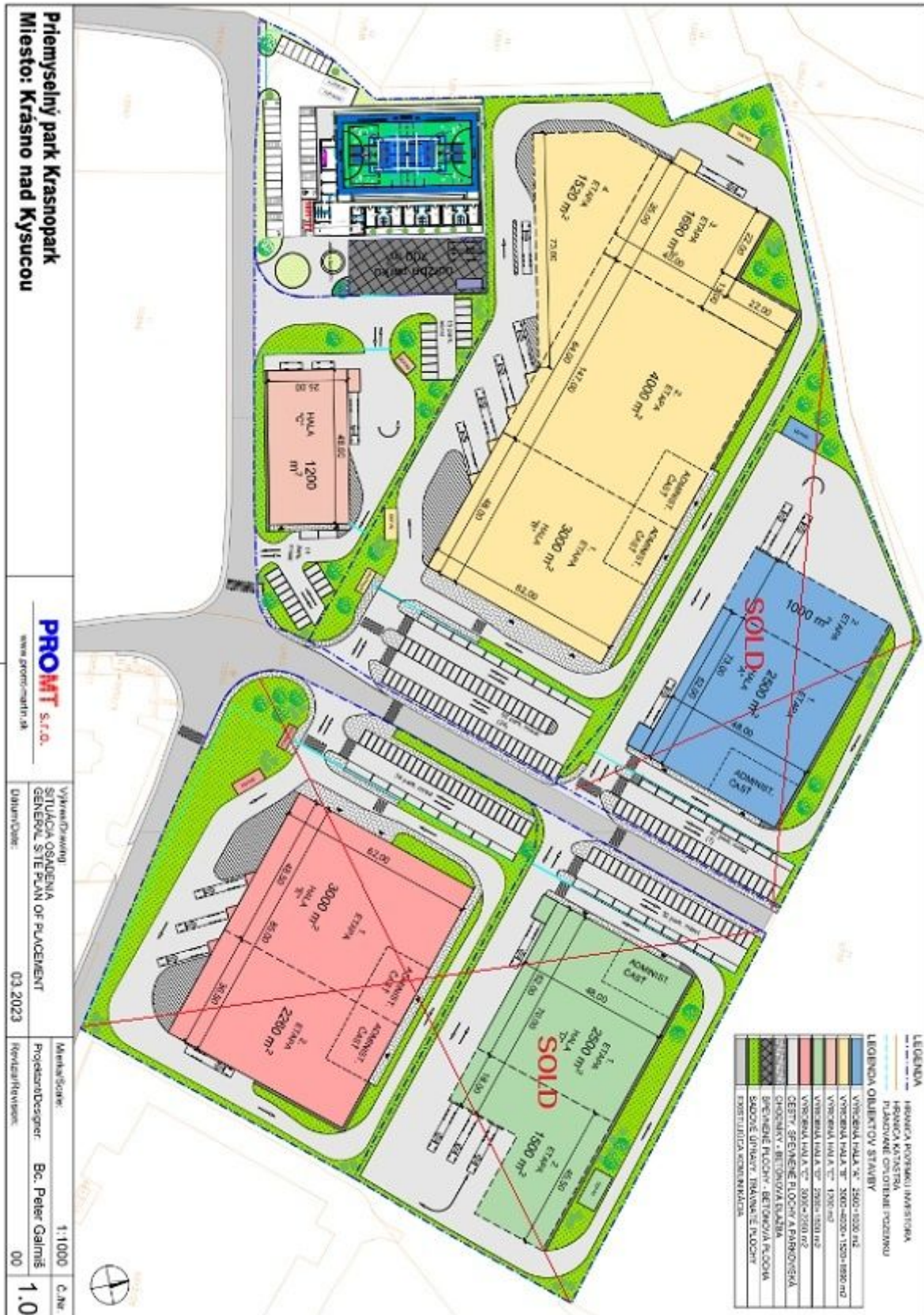
- The D1 highway to Martin, Košice and Bratislava and the E75 road to Ostrava (CZ), which is part of the planned international road D3 connecting Slovakia and Poland, ensure excellent accessibility. The railway connection with Bratislava, Košice, the Czech Republic and Poland is ensured by its own railway siding

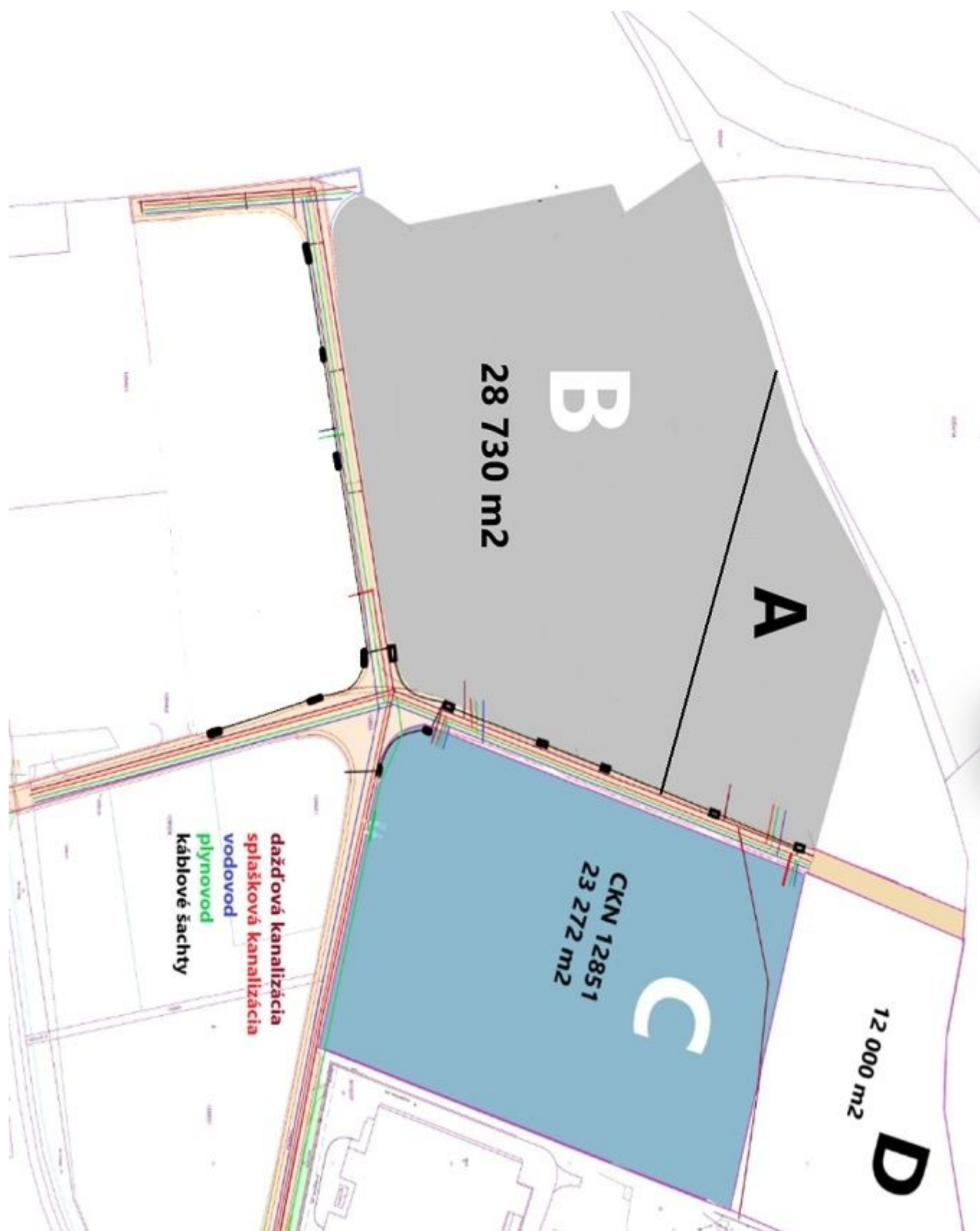
Plot B is currently available, plots A and C are sold

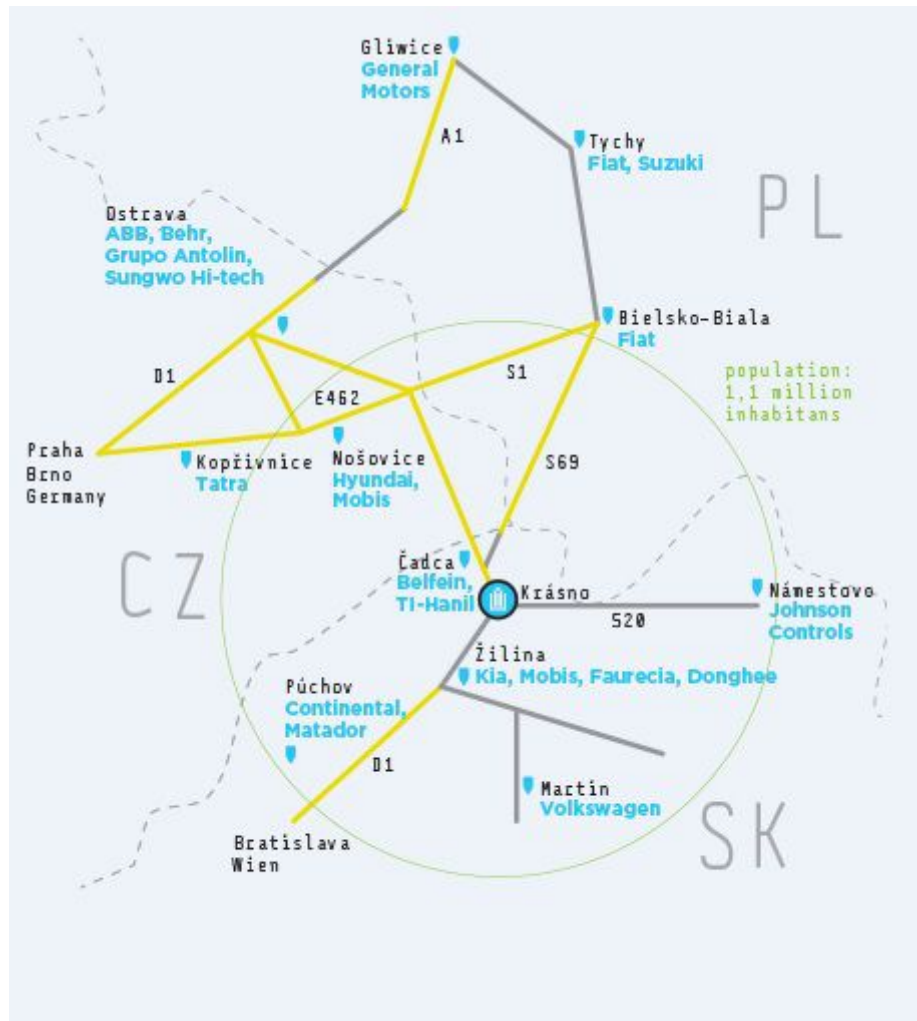
Ground surface:	flat	Location:	intravillain
Access road:	asphalt	Water supply:	by the plot
Well:	none	Umiestnenie Elektriny:	by the plot
230V:	yes	400V:	yes
Umiestnenie Plynu:	by the plot	Umiestnenie kanalizácie:	by the plot
septic:	none	sewage treatment plant:	none
Length:	0 m	Width:	0 m











Nošovice (65km)

Hyundai

Ostrava (80km)

Tychy (110km)

Fiat, Suzuki

Katowice/ Gliwice (120km)

General Motors

